

2 1/2 " dry joint - inlet flange of $4 \times \phi 17$ are all distributed on the PCD160mm flange surface, the outlet is $\phi 104.7$ mm joint, the main seal is made of Vition material sealing ring, in addition, DN80,DN50 product specifications can be selected.

Part No.: 10651D01

Connection:

Inlet Flange: $4 \times \phi 17 \times \text{PCD}160$

Outlet Connector: 104.7mm

Nominal Diameter: 61mm

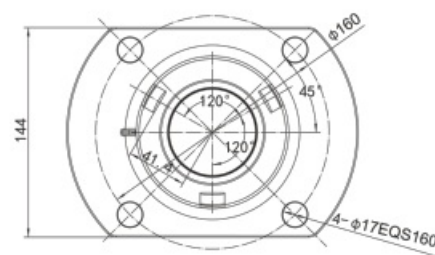
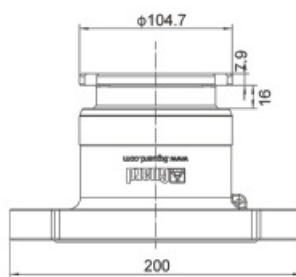
Nominal Pressure: PN25

Design Temperature: $-40^{\circ}\text{C} \sim +200^{\circ}\text{C}$

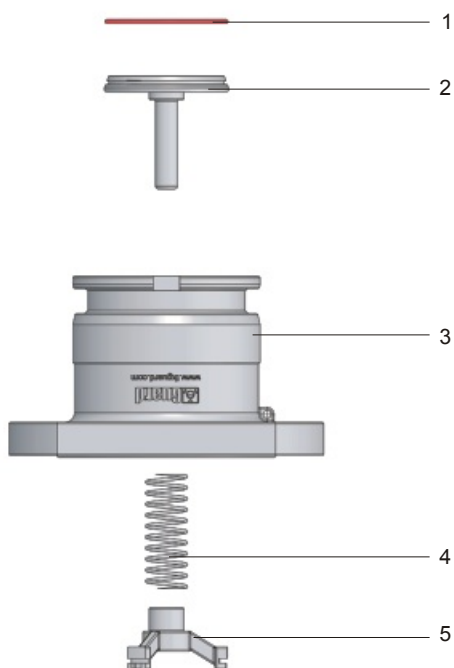
Contact Parts: CF8M

Seal: VITON

Fitting Details



Part Drawing



Item	Part No.	Description
1	8532000065*2.65	O-ring
2	10651D01-02	Pressure Plate
3	10651D01-01	Body
4	10801D01-03	Spring
5	10801D01-02	Guide Bar