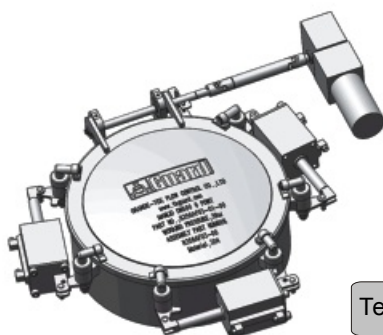


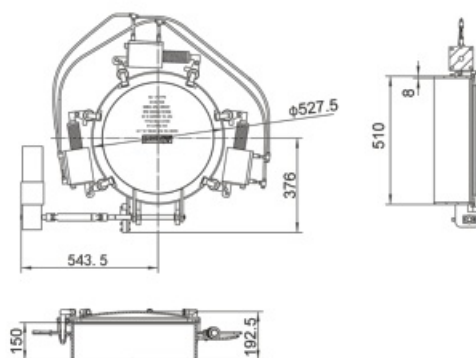
DN500 automatic manlid is driven by motor and cylinder to realize the automatic opening and closing control of the manlid cover. The operator can control the opening and closing of the manlid cover on the tank top from the ground, which is safe and convenient.

Working principle: 1. The retraction of the cylinder ejector rod drives the pressure block to move away from the upper lug; 2. The motor drives the transmission shaft to rotate clockwise, thereby driving the manlid cover to swing open; 3. The motor drives the transmission shaft to rotate counterclockwise until the manlid cover is closed; 4. The ejector rod of the cylinder extends to drive the pressing block to press the upper lug to achieve a sealed state.

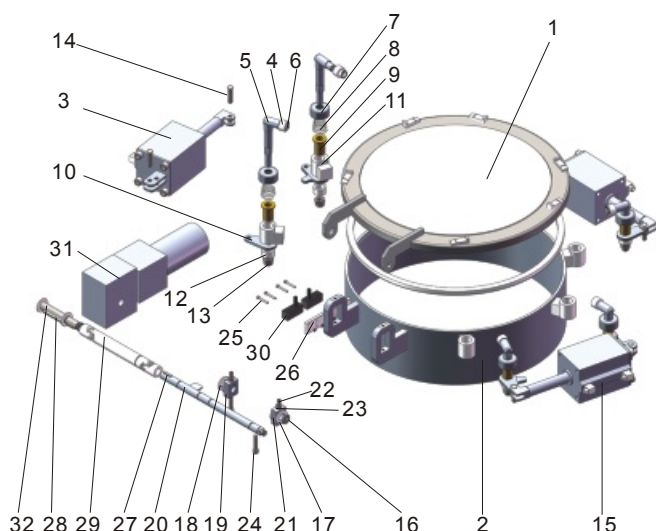


Part No.: R356AF03-00
Nominal Diameter: 500mm
Test Pressure: 2Bar (29PSI)
Design Temperature: - 40°C ~ + 200°C

Temperature range depends on the seal



Part Drawing



Item	Part No.	Description
1	R356AF030100	Automatic Manlid Cover Assembly
2	R356AF030200	Automatic Neckring Assembly
3	R356AF030300	Automatic Manlid Cylinder Assembly
4	R356AF0213	Bearing Bush
5	R356AF020700	Automatic Manlid Wheel Assembly
6	8598120016	Ring
7	R356AF030800	Spring Gland Assembly
8	APB4650106	Negative Pressure Tower Spring
9	R356AF0209	Copper Bushings
10	R356AF0210	Link Lever
11	R356AF0312	Link Lever With Limiter
12	R356AF0211	Locating Bush
13	85985400M14	Nut
14	8598640010*40	Hinge Pin
15	85989600PL803	PL8-03 Connector
16	8598120012	Ring
17	8598100012	Washer
18	8598100018	Washer
19	8598120018	Ring
20	R356AF030500	Rotating Shaft Assembly
21	R356AF0206	Manlid Slider
22	85988000M8*25	Hexagon Socket Flat End Setting Screws
23	85984200M8	Nut
24	85988100M8*40	Capscrew
25	85988100M4*30	Capscrew
26	85984200M4	Nut
27	859899080618	Buttons
28	859899080650	Buttons
29	852899090002	Cardan Joint (WSS-18-243)
30	85009903AZ15GQ	Micro-action Sensor Switch
31	8500990224V120W	Motor
32	R356AF0314	Rotating Shaft